



# PAKISTAN NOTICES TO MARINERS

## WEEKLY EDITION 50

Notice: 162 – 165(T)/23

16 DEC 2023

Copies of these Notices can be obtained gratis from Mercantile Marine Department and PN Chart Depot / NAVAREA IX Headquarters, 11 Liaquat Barracks Karachi. The same can be downloaded from web: [hydrography.paknavy.gov.pk](http://hydrography.paknavy.gov.pk).

### CONTENTS

- I NOTICES TO MARINERS**
- II REPRINTS OF RADIO NAVIGATIONAL WARNINGS**
- III CORRECTIONS TO SAILING DIRECTIONS**
- IV MARINE INFORMATION**

Mariners are requested to inform the Hydrographic Department, Naval Headquarters, 11 Liaquat Barracks, Karachi, Pakistan, immediately on the discovery of new dangers, or suspected dangers to navigation and of changes or defects in aids to navigation noticed in NAVAREA IX and of shortcomings in PAK charts or publications.

Tel : + 92-21-48506151  
+ 92-21-48506152  
Fax : + 92-21-99201623  
+ 92-21-35867737

E-mail : [hydrokp@paknavy.gov.pk](mailto:hydrokp@paknavy.gov.pk)  
[hydrpk@gmail.com](mailto:hydrpk@gmail.com)

Web : [hydrography.paknavy.gov.pk](http://hydrography.paknavy.gov.pk).


**MUHAMMAD WASIM**  
Captain Pakistan Navy  
Dy HoP

**National Hydrographic Office, Naval Headquarters, 11 Liaquat Barracks, Karachi 75530, PAKISTAN**

**PART – I**  
**NOTICES TO MARINERS**

**162/23 IRAN - Wreck. Light-beacon.**

**BA Chart 3173** [ *previous update 4236/23* ] WGS84 DATUM

Insert  26° 52′.17N., 56° 19′.48E.  
 Fl(2)6s3M 26° 52′.18N., 56° 19′.33E.

Source: Admiralty Notice to Mariners No. 4685/2023

**163\*/23 QATAR - Maritime limit. Legend. Anchor berths.**

**BA Chart 2523 (INT 7250)** [ *previous update 4418/23* ] WGS84 DATUM

Insert  C4, centred on: 25° 52′.5N., 51° 48′.5E.

**BA Chart 3772 (INT 7249)** [ *previous update 3730/23* ] WGS84 DATUM

Insert maritime limit, pecked line, joining: (a) 25° 53′.0N., 51° 48′.0E.  
 (b) 25° 53′.0N., 51° 49′.0E.  
 (c) 25° 52′.0N., 51° 49′.0E.

legend, C4 , within: (a)-(c) above

**BA Chart 3950 (INT 7244)** [ *previous update 3730/23* ] WGS84 DATUM

Insert  C4, centred on: 25° 52′.5N., 51° 48′.5E.

Source: Admiralty Notice to Mariners No. 4743\*/2023

**164/23 EGYPT - Red Sea Coast - NM Block.**

*Note:* Former Notice 4645(P)/20 (PAK Notice 140(P)/20) is cancelled.

**BA Chart 2132 (INT 7138) (Panel A, Ain Sukhna - North Port (Sokhna Port) and Oil Terminal)** [ *previous update 5072/22* ] WGS84 DATUM

Insert the accompanying block, centred on: 29° 38′.9N., 32° 20′.8E.

Source: Admiralty Notice to Mariners No. 4767/2023

**165(T)/23 INDIA - West Coast - Data buoys.**

1. \*Yellow data light-buoys, *Fl(4)15s*, with radar reflectors and mast carrying sensors have been established in the following positions:

<b>Buoy</b>	<b>Position</b>
AD06	18° 18′.9N., 67° 20′.5E.
TB12	19° 53′.1N., 66° 59′.8E.
STB02	20° 45′.6N., 65° 16′.8E.

2. Mariners are advised to maintain a clearance of 1 nautical mile.
3. The positions of these buoys change frequently. The latest positions are available on the Indian National Centre for Ocean Information Services website at [incois.gov.in/portal/OON.jsp](http://incois.gov.in/portal/OON.jsp)
4. \*Former Notice 3433(T)/22 (PAK Notice 38(T)/23) is cancelled.  
 \*Indicates new or revised entry  
 (WGS84 DATUM)

**Charts affected –PAK 57 (INT 751) and BA 707**

Source: Admiralty Notice to Mariners No. 4706(T)/2023

**PART – II****RADIO NAVIGATIONAL WARNINGS**

**460/23. SOUTHERN GULF.** Dubai. Charts BA 2887, 2889, 3175 and 3176. No fishing or diving activity within circular zone of radius 6.5 kilometers around moon island in position 25-18.30N 054-40.02E. Mariners cautioned.

**461/23.** Container vessel MV My Princess removal operation completed and vessel salvaged. Cancel Navarea IX 065/23, 350/23 and this msg.

**462/23. CENTRAL GULF.** Qatar. Charts BA 2523, 2883 and 2886. Following mooring buoys temporarily removed for maintenance:

No.1 26-34.59N 052-00.02E  
 No.2 26-34.59N 052-00.29E  
 No.3 26-41.82N 051-55.31E  
 No.4 26-41.81N 051-55.68E

Mariners cautioned. Cancel Navarea IX 339/23 and 417/23.

**463/23. GULF OF OMAN.** Oman. Charts BA 2851, 2858, 4705, Oman Charts OM 1, 1214, 1215, 3505. Firing exercise will be conducted from 191000 to 191400 UTC and 201135 to 201500 UTC Dec 23 in area bounded by following coordinates:

a. 24-18.00N 057-40.00E  
 b. 24-00.00N 058-39.00E  
 c. 23-51.75N 058-20.00E  
 d. 23-51.75N 058-06.00E  
 e. 24-09.00N 057-40.00E

Mariners cautioned. Cancel this msg 201700 UTC Dec 23.

**464/23. PAKISTAN.** Port Muhammad Bin Qasim Channel. Charts PAK 20 (INT 7316) and BA 59. Maximum permissible draughts/ dimensions for ships calling at Port Muhammad Bin Qasim till 15 May 24 are as under:

<b><u>Berth</u></b>	<b><u>Permissible Draught (Meter)</u></b>	<b><u>Length Over All (Meter)</u></b>	<b><u>Beam (Meter)</u></b>
LCT	10*	210	33
MW-1	9.5	225	33
MW-2	10	225	33
MW-3	10	225	33
MW-4	10.5*	225	33
QICT-I (Berth No 5)	12**	up to 310	48
QICT-I (Berth No 5)	12**	more than 310 and up to 340	46.5
QICT-I (Berth No 7)	12.5**	up to 310	48
QICT-I (Berth No 7)	12.5**	more than 310 and up to 340	46.5
QICT-II	13	up to 310	48
QICT-II	13	more than 310 and up to 340	
FAP (Grain & Fertilizer)	13 (Max Dwt 75000 tons)	250	43.5
EVTL-13	11	225	40
IOCB	12 (Max Dwt 75000 tons)	230	40
EETL (LNG-1)	12***	295	43.4
PGPC (LNG-2)	12***	295	43.4
FOTCO Oil Terminal	13 (Max Dwt 75000 tons)	245	42
SSGC/ LPG	10	163	33
PIBT	13	230	33
PQEPC Terminal	12	210	33

\* Vessels more than 9.5 meter and upto 10 meter draught at LCT terminal and vessels more than 10 meter and upto 10.5 meter draught at MW-4 will be allowed by taking benefit of tide.

\*\* Vessels more than 11.5 meter and upto 12 meter draught at QICT-I (Berth No 5) and vessels more than 12 meter and upto 12.5 meter draught at QICT-I (berth no 7) will be allowed by taking benefit of tide.

\*\*\* LNG Q-Flex calling to EETL terminal under dispensation are allowed from 16 Sep 23 to 15 May 24 upto draught of 11.5 meter

Cancel this message on 16 May 24.

**465/23. SELF CANCELLING.** Navigational warnings inforce:

2021 series: 109, 224, 397, 399, 445, 448, 490 and 491.

2022 series: 027, 039, 067, 095, 102, 112, 185, 198, 211, 220, 227, 294, 295, 311, 328, 331, 358, 443, 477, 480, 483, 489, 497, 501, 505, 506, 507 and 513.

2023 series: 025, 028, 034, 058, 067, 068, 070, 071, 094, 096, 102, 103, 110, 111, 116, 120, 124, 131, 135, 138, 159, 177, 190, 201, 221, 226, 237, 245, 263, 266, 284, 288, 293, 297, 299, 307, 314, 315, 318, 326, 338, 340, 341, 346, 355, 359, 361, 371, 372, 376, 378, 389, 395, 397, 398, 404, 410, 412, 415, 420, 421, 427, 430, 435, 437, 439, 442, 443, 447, 448, 450, 451, 453, 455, 457, 460, 462, 463 and 464.

**COASTAL WARNING**

**126/23. PAKISTAN.** Port Muhammad Bin Qasim Channel. Charts PAK 20 (INT 7316) and BA 59. Maximum permissible draughts/ dimensions for ships calling at Port Muhammad Bin Qasim till 15 May 24 are as under:

<b><u>Berth</u></b>	<b><u>Permissible Draught (Meter)</u></b>	<b><u>Length Over All (Meter)</u></b>	<b><u>Beam (Meter)</u></b>
LCT	10*	210	33
MW-1	9.5	225	33
MW-2	10	225	33
MW-3	10	225	33
MW-4	10.5*	225	33
QICT-I (Berth No 5)	12**	up to 310	48
QICT-I (Berth No 5)	12**	more than 310 and up to 340	46.5
QICT-I (Berth No 7)	12.5**	up to 310	48
QICT-I (Berth No 7)	12.5**	more than 310 and up to 340	46.5
QICT-II	13	up to 310	48
QICT-II	13	more than 310 and up to 340	
FAP (Grain & Fertilizer)	13 (Max Dwt 75000 tons)	250	43.5
EVTL-13	11	225	40
IOCB	12 (Max Dwt 75000 tons)	230	40
EETL (LNG-1)	12****	295	43.4
PGPC (LNG-2)	12****	295	43.4
FOTCO Oil Terminal	13 (Max Dwt 75000 tons)	245	42
SSGC/ LPG	10	163	33
PIBT	13	230	33
PQEPC Terminal	12	210	33

\* Vessels more than 9.5 meter and upto 10 meter draught at LCT terminal and vessels more than 10 meter and upto 10.5 meter draught at MW-4 will be allowed by taking benefit of tide.

\*\* Vessels more than 11.5 meter and upto 12 meter draught at QICT-I (Berth No 5) and vessels more than 12 meter and upto 12.5 meter draught at QICT-I (berth no 7) will be allowed by taking benefit of tide.

\*\*\* LNG Q-Flex calling to EETL terminal under dispensation are allowed from 16 Sep 23 to 15 May 24 upto draught of 11.5 meter.

Cancel this message on 16 May 24.

**127/23 SELF CANCELLING.** Navigational Warnings Inforce:

2022 series: 024, 027, 060, 063, 081 and 082

2023 series: 027, 073, 093, 117, 121 and 126

WPGs Inforced 2023: 47

WPGs Cancelled 2023: Nil

**PART – III**

**CORRECTIONS TO SAILING DIRECTIONS**

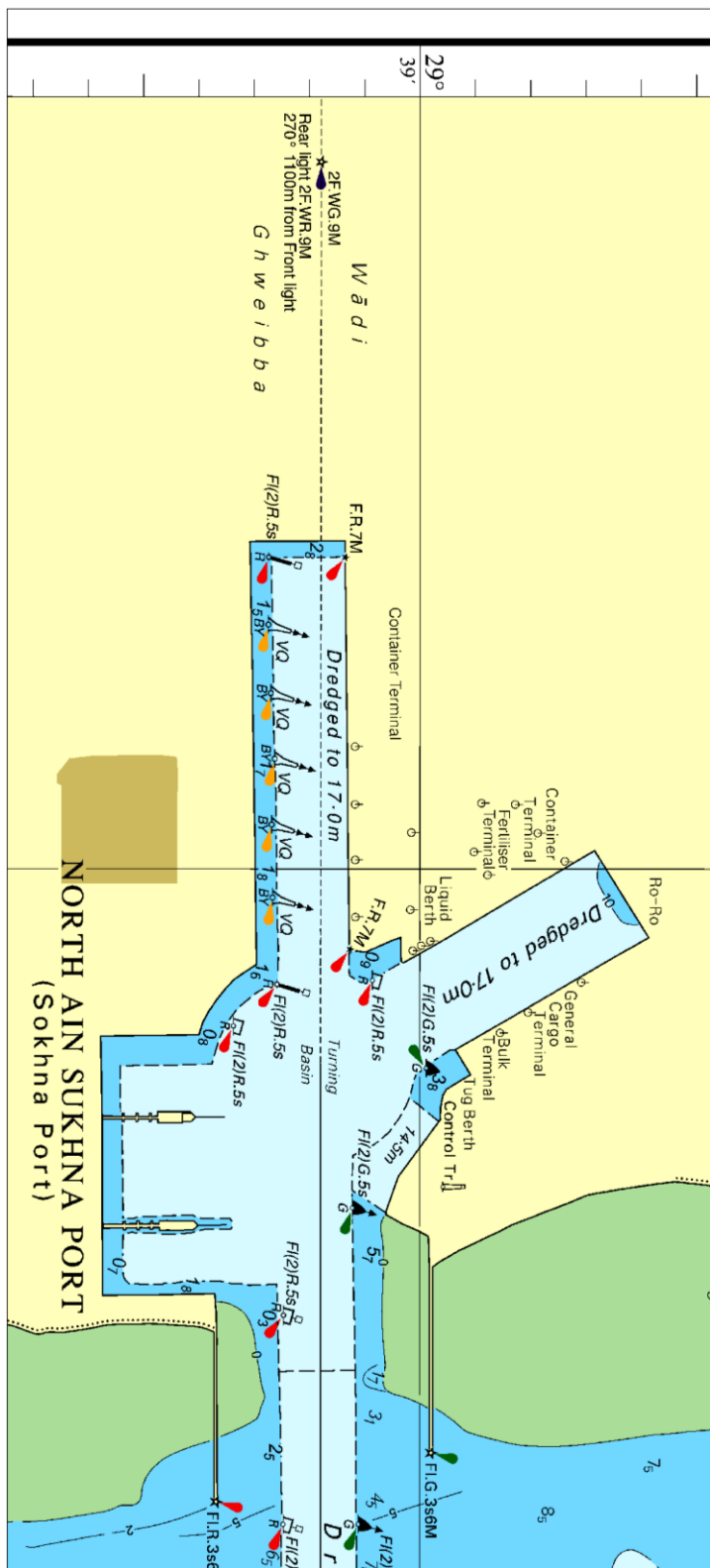
Nil

**PART – IV**

**MARINE INFORMATION**

Nil

To accompany Pakistan Notice to Mariners 164/23.



Block for BA Chart No 2132

NP77, Vol D Edition 2023. Weekly Edition No. 50, Dated 14 December 2023.  
 Last Updates: Weekly Edition No. 48, dated 30 November 2023.

<b>D2404-2</b> ES, I, 10653-52	- Caño de SanctiPetri. Puerto de Gallineras. Barrera antiolaje. E End	36 26-22 N 6 12-38 W	Q R 1s	..	1 Red and white post	..	
			*				
<b>D2404-3</b> ES, I, 10653-50	- Caño de SanctiPetri. Puerto de Gallineras. Barrera antiolaje. W End	36 26-23 N 6 12-41 W	Fl(4)G 11s	..	1 Green and white post 2	<i>fl 0-5, ec 1-5) x 3, fl 0-5, ec 4-5</i>	*
			*		*		*
<b>D2404-35</b> ES, I, 10653-56	- Caño de SanctiPetri. Puerto de Gallineras. Salineta Dike. NE	36 26-32 N 6 12-29 W	Fl(2)R 7s	..	1 Red and white post	<i>fl 0-5, ec 1-5, fl 0-5, ec 4-5</i>	*
			*				*
<b>D2621-8</b> FR, L2, 19080	- Transverse Breakwater. Head	27 05-38 N 13 25-69 W	Fl(2)G 6s	6	8 $\Delta$ on green beacon	<i>fl 1, ec 1, fl 1, ec 3</i>	*
							*
<b>D3122</b> FR, L2, 29160	SASSANDRA - <b>Sassandra</b>	4 57-01 N 6 04-96 W	Fl(3)W 15s	60	16 White tower, black top 10	Vis over an arc of 250°	*
			*				*
<b>D3126</b> FR, L2, 29220	- <b>Jacqueville</b>	5 11-36 N 4 32-31 W	Fl(3)W 15s	..	15 White tower 15	..	*
	*	*	*				*
<b>D6432</b> ZA, , Z6215	EAST LONDON. APPROACHES - Nahoon Point	32 59-89 S 27 56-70 E	Fl W 3s	68	8 White tower, red band	<i>fl 0-3.</i> <b>TE 2023</b>	*
							*
<b>D7620-4</b> *	- Khowr-E Bahmanshir. No 6	29 58-70 N 48 43-56 E	Fl(2)R 6s	5	7 Pile	..	*
	*	*	*	*	*	*	*
<b>D7720-2</b>	- Damāgheh-ye Chābahār. Behashti	25 17-19 N 60 36-61 E	Fl(3)W 15s	44	12 Tower	..	*
			*	*	*		*
<b>D8605-35</b>	GRONDIN OIL DRILLING AREA Remove from list; deleted						